

The Loon Call



VOLUME 51: Spring 2010

www.weslemkoon.com

ISSN #1480-9583

IN THIS ISSUE

DIRECTORS' REPORTS

President's Letter	1
Editor's Letter	3
Logging	4
2009 Fish Survey	8
Custodial & Markers	9
Financial Report	10
Membership	11
Municipal Affairs	12

DEPARTMENTS

Lake Book	13
Lake Events 2009	14
Horseshoes	16
Making Bread	17



Lake Welsemkoon Sailing Regatta 2009

PHOTO: Sean Boyle

President's Letter

Terry Beettam

AT THE TIME OF WRITING THIS, it's still winter and yet spring will be here before we know it. I want to impress on all readers that 2010 has the potential to be a very important year for all of us.

At our 2009 AGM, after accepting the gavel, I presented the idea of developing a Lake Plan. For those of you who were not in attendance, a Lake Plan is a strategic plan which encapsulates policies and actions for the LWCA over the long term, say 5 years as an example. As such, it potentially commits future boards to the plan, and hence requires a great deal of buy-in from a wide spectrum of individuals. It typically encompasses stewardship plans and practices across many areas, all linked to improving the quality of life at the lake.

Putting together such a plan is a big job; so big that, frankly, our board is not yet willing to commit to the plan until we have ascertained the scope of the task. This is where all of you come in. We believe that the first step is to solicit input from all our constituents – members and non-members, permanent and seasonal residents – to help us understand the wants and needs of everyone.

To this end, we are inviting you to participate in a Community Survey which will be available through our website beginning March 1st until June 30th (see details in the sidebar accompanying my letter). A survey of this type has not been offered in many



LAKE WESLEMKOON
CONSERVATION ASSOCIATION



PHOTO: Pam Lawton

years so I urge you to invest a few minutes to complete it. Your input is vital.

Several associations across the province have already

WE ARE INVITING YOU TO PARTICIPATE IN A COMMUNITY SURVEY WHICH WILL BE AVAILABLE THROUGH OUR WEBSITE BEGINNING MARCH 1ST UNTIL JUNE 30TH

embarked on this approach, the latest of which is the Skootamatta District Ratepayers Association (SDRA) located in Addington Highlands Township. Their results have been very insightful. We hope ours will be as valuable. We will be provid-

vey will guide us in all our major initiatives this year.

Finally, as the incoming president of the LWCA I want to express my thanks

on behalf of all members for the tireless work of Dan Derumaux, our past president. Having had this job now for 6 months I am beginning to appreciate all he has contributed over the last 2 years.

Enjoy this issue of *The Loon Call*.

Spring is not far away. I look forward to seeing you all very soon.

Terry Beettam, President

ing results of our survey to you at the 2010 AGM.

The second important event this year will be the municipal elections in October. Your board intends to follow this very closely and to provide forums for aspiring candidates to indicate what their platforms will be. When the board meets in May we will be discussing how best to organize these.

Third, it has come to my attention that provincial legislation requires a 5 year review and revision of each municipality's Official Plan. February 2011 is the deadline for Addington Highlands, and as such, discussions will be ongoing through 2010. We have committed to participating in a coalition of associations located in AH led by the SDRA to ensure that the official plan gets a thorough examination. More on this as the year progresses.

As you can see your responses to the sur-

Editor's Letter

Sean Boyle



PHOTO: Mimi Thompson

Spring is upon us and we have just sailed through the driest winter in 63 years. It certainly was pleasant this year. I visited the cottage this winter and it was a neat adventure. It is a different place at Weslemkoon with the lake covered in ice. There were ploughed roads from the south end to the north end and places in between. The birds and squirrels were in abundance and I always wonder how they survive in the winter. I noticed the squirrel was drinking the sap off of a maple tree. When I was there the sap was running and the maple syrup makers were busy preparing the special Canadian brew.

We hope you enjoy this year's edition of the *Loon Call* and feel free to send any interesting thoughts to the editor for review and comment. We like to share stories.

I am sad to announce the passing of Marg Broad. Marg was a long time cottager on Whale Island. Her husband Alex built their cottage on Whale Island just after the 2nd World War.

Lastly, thank you to all who have contributed to this year's *Loon Call* especially the president, the directors and Stuart Inglis who works with me to create this wonderful newsletter.

Sincerely,

Sean Boyle, *The Loon Call* Editor 2010

The Loon Call is published annually in the spring by the Lake Weslemkoon Conservation Association.

The Loon Call would like contributions such as stories, photos of activities with your family on the lake, interesting articles concerning Lake Weslemkoon and Otter Lake. Please send your submissions to:

The Loon Call, Attn: Sean Boyle, The Fairmont Royal York Hotel, 100 Front Street West, Toronto, Ontario M5J 1E3

For other updates please review the website at www.weslemkoon.com.

Association Members and Friends of the Lake receive *The Loon Call* by mail in the spring as part of membership. Single copies are available in limited quantities at marinas after July 1st for \$5.

© 2010 Lake Weslemkoon Conservation Association

LAKE WESLEMKOON CONSERVATION ASSOCIATION



Directors' meeting May long weekend 2009

OFFICERS & DIRECTORS 2010

TERRY BEETTAM
*President,
Lake Levels (interim)*

SEAN BOYLE,
The Loon Call

DAN DERUMAUX,
Past President

KEN SENTER
*Marker Lights, Custodial,
and Liaison Commercial
non-Marina Owners*

JON KEEBLE
Co-Secretary

GLEN HOGG
*Land Use Planning/
Protection/Logging*

LESLIE REYNOLDS
Co-Secretary

DIANE MORDEN
Treasurer

PAUL BOTTOS
Municipal Affairs

PAM BOUCHER
Lake Survey

JEAN GREIG
Membership

STUART INGLIS
Communications

CATHERINE RATHBUN
Grand Loon

ED MACKENZIE
RICH CROWLEY
Webmasters

LAKE WESLEMKOON COMMUNITY SURVEY

The LWCA Board of Directors is pleased to announce the availability of a Community Survey which we urge all members to complete. After initial discussions at the 2009 AGM regarding developing a Lake Plan, we wish to hear from you to determine the scope, direction and feasibility of such a plan. The survey is available to members and non-members, permanent and seasonal residents of our two lakes, and covers a wide variety of topics relating to life on our lakes, present and future.

Respondents are asked to complete the survey online by going to our website, www.weslemkoon.com and clicking on the link, "Complete the Survey". The survey will be available until June 30, 2010 but we ask you try and complete it as soon as possible. Results of the survey will be discussed at the 2010 AGM.

Please address any questions to me at tboucher@nexicom.net. Thank you for your interest and assistance.

Pam Boucher



This issue of *The Loon Call* has been printed on paper approved by the Forest Stewardship Council. Visit www.fsc.org for more information on their program.

Logging

Glen Hogg

IN THE SUMMER OF 2009 there were two logging hikes, one to view an area that was planned to be logged starting Nov 2009; the other to view an area where logging activity took place in the fall of 2008 and winter 2009.

The first hike was Saturday July 25, 2009. It was to an area west of Weslemkoon Marina and behind the islands. Access to the area was by boat and made difficult because of the very shallow water which required slow movement and some paddling to reach the shore. It is an area that has not had logging activity in a number of years. This was a bush-whacking hike because the area is densely treed with a large amount of undergrowth. In addition the ground was very uneven and made the going difficult. We made our way to a swamp and followed along the edge. The bugs were glad to see us and welcomed us en masse!

There were no views or vistas but plenty of dense growth. At several locations we noted that trees had blown down. These areas provided some clearing and permitted us to see a little more of the surrounding area. One of the dead falls shown in the picture served as a bench while we had a break. The area has a diverse mix of



easy. We had a larger turnout for this hike and the youngest participant was 9 months, carried by her mother.

This area was logged in the fall of 2008 and winter of 2009. As we hiked along the logging road we observed several areas where cutting operations had occurred. Most logged areas were small patches of random shapes as per the forest management guidelines. The area appeared more like a forest thinning oper-

ation than clear cut. A large number of trees of various types were left standing.

This included seed trees and some dead and hollow trees that were left standing as wildlife habitats and bird perches. The cut logs from the past winter were stacked up in piles awaiting transport. We hiked out to the control point where it was noted that that every morning a truck had been in and picked up a load of logs and left a bill of lading at the control point. A short hike farther along the road brought us near the edge of Green Lake. Here we stopped for a break. We headed back via an alternate route along an old trail leading through some of the logged areas. The cutting plan included leaving on the ground the "downed woody debris" as shelter for small animals and, over time, it will break down to provide natural nutrients for the new forest. The downed woody debris made the site look messy and was hard to navigate.

This area is located in the Bancroft-Minden forest management area. From our observations it appears that all the logging was carried out in accordance with the plan and good forest management practices were used.

ONTARIO FORESTRY REALIGNMENT BETWEEN MINISTRY OF NATURAL RESOURCES AND MINISTRY OF NORTHERN DEVELOPMENT, MINES AND FORESTRY

Last year the Ontario government made changes to realign the responsibilities of

the Ontario forest management. The realignment will not change the contacts that the LWCA deals with. The MNR Bancroft office will continue to be the main contact and personnel remain the same. The forester for the Mazinaw-Lanark area is Gareth Davies and the forester for the Bancroft-Minden area is Bruce Fleck.

The Ontario Government announced June 24, 2009 that responsibility for forestry was being realigned between the Ministry of Northern Development, Mines and Forestry [MNDMF] and the Ministry of Natural Resources [MNR] effective immediately.

The Ministry of Northern Development, Mines and Forestry is now leading the business and economic aspects of forestry, including industrial strategy, forest sector competitiveness programs, softwood lumber and wood allocation, pricing and licensing.

The Ministry of Natural Resources remains responsible for sustainable forest management and stewardship, including forest management planning, forest health and science, and the provision of habitat, including the requirements under the Endangered Species Act.

On September 3, 2009 the Ontario government announced the that the realignment of forestry from Ministry of Natural Resources (MNR) to the Ministry of Northern Development, Mines and Forestry (MNDMF) was complete. The reasons given for the realignment was to help make the province more competitive, create jobs and strengthen our economy.

This realignment allows MNDMF to champion the forest industry and to be a powerful voice for the industry. MNDMF's focus will be on the economic development of the forest industry in recognition of the important role the industry plays in Ontario's communities. The ministry is responsible for industrial

strategy and relations and mills, wood supply and pricing.

- Industry relations functions:
 - Forest industrial policy
 - Tenure and pricing reform
 - Bioeconomy
- Forestry industry competitiveness program
- Forest economics and analysis
- Forest industry relations
- Softwood lumber (international trade)
- Wood promotion and marketing
- Aboriginal economic development
- Wood allocation, pricing and licensing
- Timber billing
- Roads program.

MNR continues to play a critical role in ensuring our forests are managed sustainably. This is vital to the health of our environment and the health of our economy. MNR is responsible for:

- Forest policy and Guideline development
- Legislation (Crown Forest Sustainability Act)
- Forest management planning
- Forest environmental assessment

- Forest modelling
- Silviculture program
- Forest health (invasive species, pests, seed plant)
- Compliance and forest audits
- Forest certification
- Forest trusts (renewal and futures trusts)
- Public reporting on forests sustainability.

MNR field operations will continue to deliver on frontline forestry, including:

- Forest management planning
- Annual reporting
- Compliance.

Both ministries are working together to ensure the delivery of the provincial forest program, transfer of staff and the realignment occur smoothly with no disruptions.

Forest management planning and compliance enforcement are the two areas where the LWCA most interact with the forest management team. We will continue to contact the same people we have dealt with in the past. MNR Bancroft office will provide these key business functions as they have in the past. **L**

MOST LOGGED AREAS WERE SMALL PATCHES OF RANDOM SHAPES AS PER THE FOREST MANAGEMENT GUIDELINES.

tree types, however the most common trees we noted were popular and hemlock.

When we completed the hike, most of us had some souvenir markings from bush-whacking. All and all this was a good hike.

The second hike (Saturday August 8, 2009) started from the Green Lake portage at the bottom of the main part of West Bay. This hike was along paths and temporary logging roads which made the going

easy. We had a larger turnout for this hike and the youngest participant was 9 months, carried by her mother. This area was logged in the fall of 2008 and winter of 2009. As we hiked along the logging road we observed several areas where cutting operations had occurred. Most logged areas were small patches of random shapes as per the forest management guidelines. The area appeared more like a forest thinning oper-

HIKES SUMMER 2010

Saturday August 7, 2010 at 10:00 AM

This will be a little different than the past hikes in that we will paddle and hike the shore north of Weslemkoon Marina. This will be to a proposed area for logging in the 2011 to 2021 plan and is a block about ½ km north of Weslemkoon Marina on the west shore. The plan for this expedition is to meet at Weslemkoon Marina and paddle up and along the shore north of the marina to the proposed logging area. Here we will beach the canoes/kayaks get out and do a short scout around the land, then paddle back to the marina.

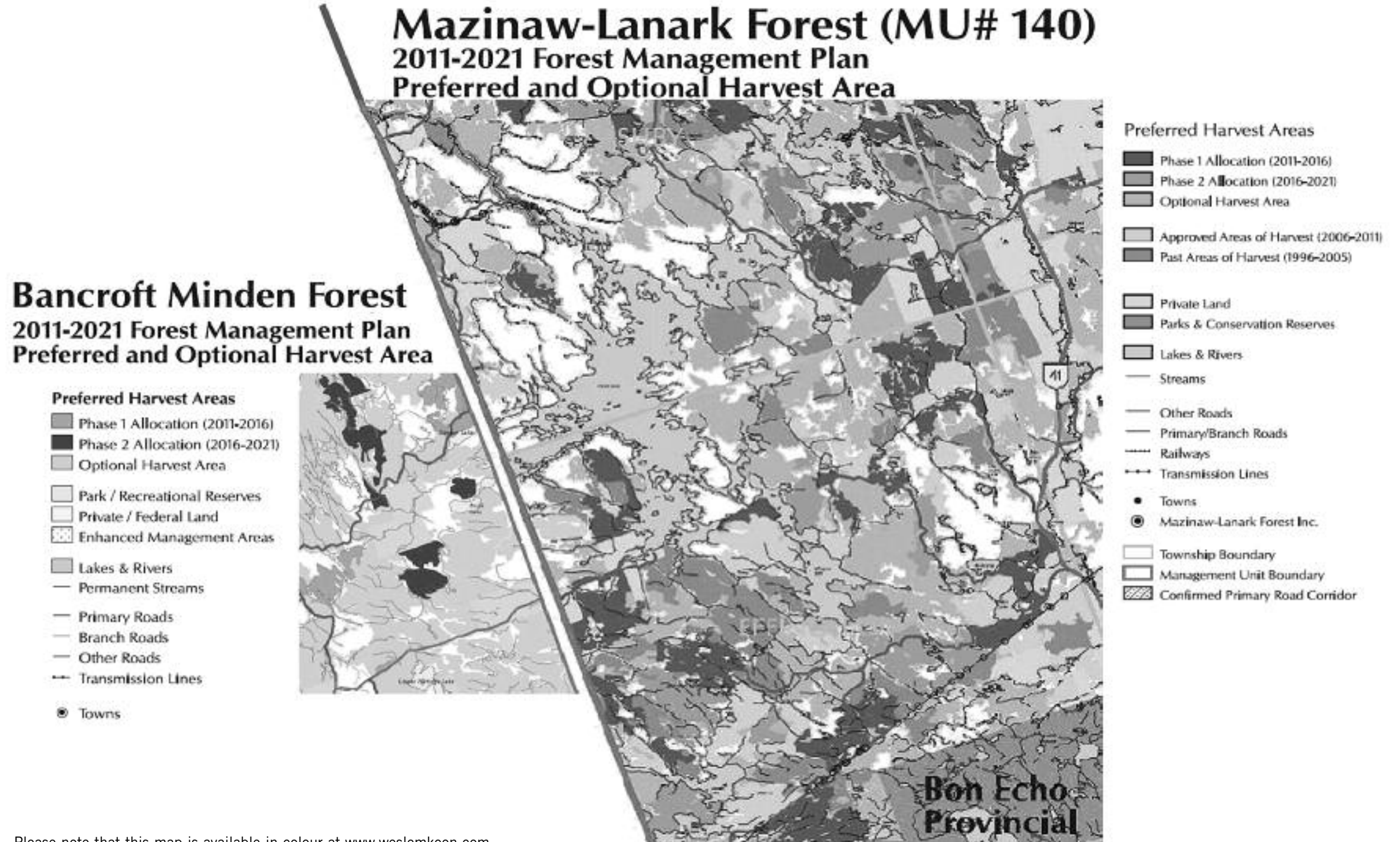
Check the Weslemkoon web site between July 1 to July 15 to see if any other logging hikes will be organized in the coming summer.

FUTURE 2011-2021 FOREST MANAGEMENT AROUND WESLEMKOON AND OTTER LAKES

The majority of our lake is in the Mazinaw-Lanark forest management area and this map covers the largest area of the lake. A small part at the bottom of West Bay falls in the Bancroft-Minden forest management area and this map only shows that area.

The maps show the overview of the future forest management plans 2011-2021 for both areas. These plans are in the early stages and may have changes before they are finished. However at the end of January 2009 [time of writing] the MNR was available to provide copy of Preferred and Optional Areas for Operations map. These maps show Weslemkoon and Otter Lakes and suggested logging operations that may take place between 2011 and 2021. A quick summary is that there are only a few areas of suggested logging operations around the lakes. There are not many areas proposed for logging activity in the next 10 year plan. These preliminary areas in general are not located close to cottages and are removed from the lakes. A couple of proposed logging blocks will require set backs to meet the requirements of the forest management plan and maintain the viewscape.

The LWCA will follow and comment to the ministry on this future logging plan as more concrete details and lay out.



Please note that this map is available in colour at www.weslemkoon.com.

2009 Fish Survey

Jon Keeble

LAKE WESLEMKOON WAS PART of a province wide fish count and health survey in the late summer of 2009.

The lake was randomly selected for "The Broadscale Monitoring Fisheries Assessment" launched by the Ministry of Natural Resources in 2008. Some lakes are scheduled for annual studies while our lake could be re-visited in 5 year cycles, assuming funding continues. Many of Ontario's lakes over 20 hectares in area are to be sampled over the study. In addition to Lake Weslemkoon, in our region Ayles, Jack, Goodwin, Govan, McKenzie, Meach, Palmerston, and Redstone were sampled in 2009.

The long term Ministry of Natural Resources study is being conducted across the Province in three geographic zones. Weslemkoon is in the southern sector and our study is based in Bancroft led by MNR Area Biologist Erin MacDonald.

The Broadscale Monitoring Fisheries Assessment has economic and scientific dimensions. Recreational fishing in Ontario is worth \$2.5 billion dollars a year with 1.3 million participants and healthy fish stocks are key to maintaining this.

Residents and cottagers noted a number of floats demarking gill nets in many locations on Weslemkoon. A few residents and visitors observed the MNR crew raising some of the nets and expressed concern that the catch was numerous and most were dead, unfortunately essential



PHOTO: Bill Riffle

catch listed in the sidebar on page 9. Two types of gill nets are used to determine which species are in a selected lake and then note the size and estimated quantity.

In the nine day capture cycle from August 18-21 and 24-28, the MNR collected 459 fish from 41 sites on the lake. Samples were gathered at 7 depth settings: 1-3 metres, 3-6, 6-12, 12-20, 20-35, 35-50

and 50-75 metres as different species prefer different depths. 17 nets were small mesh gill nets to catch all the species

and 24 nets used larger mesh to capture sports fish.

For the sampling process to be valid in scientific terms, a minimum of 20 sports fish per species is needed. After measuring them physically, they are shipped to the Ministry of the Environment for chemical analysis which results in the guidelines for eating them. In the first year of the study, 2008, the MNR found modified levels of contaminants (such as heavy metals) in fish from 65 lakes which were reflected in the newest 2009-10 version of the Guide to Eating Ontario Sport Fish.

The technical team will release any fish over the 20 sampling limit but because the nets are set overnight, most of the

PRELIMINARY RESULTS FROM THE 2009 STUDY ON LAKE WESLEMKOON:

11 species in order of quantity

Yellow Perch	195
Rock Bass	86
Smallmouth Bass	68
Lake Trout	36
White Sucker	30
Pumpkinseed	26
Brown Bullhead	6
Largemouth Bass	6
Bluntnose Minnow	2
Common Shiner	2
Fallfish	2

Early data on Species and length analysis:

Of the 36 lake trout caught:

- 23 (64%) were less than 300mm (11.8 inches).
- 8 in the 300-349mm (11.8-13.7 inches)
- 2 in the 350-399mm (13.7-15.7 inch)
- 2 in the 400-449mm (15.7-17.7 inch) length classes.
- One large lake trout was captured in the 800-849mm (31.5-33.4 inch) length class.

All lake trout were unclipped, meaning they were all naturally reproduced in Weslemkoon Lake.

Of the 68 smallmouth bass caught

- 34 (50%) were in the 100-149mm (3.9-5.9 inch) length class.
- The remainder of the smallmouth ranged from 150mm (5.9 inches) to 500 mm (19.6 inches).

Ms. MacDonald says there will be a more detailed summary report available following completion of the first five-year cycle, outlining the results of the entire broadscale monitoring for our district.

captured fish died. Six of the 36 lake trout netted in Weslemkoon were released alive.

Many of the 459 fish have been examined for sex, age, length, weight, nutrition, parasites, contaminants and general health.

Preliminary study results are in the sidebar accompanying this article.

Technicians also took water samples, temperatures, oxygen levels, clarity and observed for invasive species. Results for these parameters were not available

at time of publication.

The Province wide study also includes aerial surveys summer and winter to estimate the number of anglers using these lakes. Lake Weslemkoon will be observed sometime in the summer of 2010. **L**

Custodial & Markers

Ken Senter

OVER 200 CUSTODIAL VISITS were performed by Reg Smith, our LWCA custodian, during his spring and fall inspections. Reg also performs annual and monthly visits to the 20 battery operated marker lights scattered around our lake.

Requests for new marker lights can be considered by the LWCA board by downloading the requisition form from the LWCA website or contacting the director. Once completed, your request will be reviewed extensively by the board

and a decision made. In the meantime temporary non-blinking markers could be installed by interested parties to indicate these additional or new hazards.

LWCA has ordered and received three new replacement spare markers in July as our 11 spares are of 2001 vintage. These spares are only warranted for three years or product life of five years at best, and not all the spares have the flash pattern feature that we have standardized on. The cost of new markers was approximately \$220 per unit.

Reg Smith has advised the board he wishes to retire from performing the custodial visits after the March 2010 rounds. However he is staying on for the time being or foreseeable future as Custodian of the Marker Lights. The board is in the process of recruiting a new Custodian of Custodial Visits and a replacement should be determined by early spring 2010. On behalf of the board, I would like thank Reg Smith for his conscientious and reliable performance of his custodial visits. **L**

LAKE WESLEMKOON WAS PART OF A PROVINCE WIDE FISH COUNT AND HEALTH SURVEY IN THE LATE SUMMER OF 2009.

for the study to get results.


The study examines every species, not just sports fish as evidenced by the gill net

2009 Financial Report

Diane Morden

2009 HIGHLIGHTS

Our 2009 Financial Statements continue to reflect a strong financial position at the end of that fiscal year.

- Overall our revenues are up slightly by 3%.
- We earned less than ½% from our invested cash. This has been allocated on an appropriate basis between our operating cash and our two restricted funds.
- Our expenses have been held at levels consistent with pre 2008 levels which you will recall included significant water testing throughout the lake.
- The large increase in the costs of publishing *The Loon Call* (30%) has been reduced by the 137% net increase in advertising within the magazine. Overall the total net increase in publishing and distributing *The Loon Call* has only increased by 1%.
- Our restricted funds continue to grow. These funds are restricted in their use by the contributors and are not available for the general purposes of the Association.
- The Environmental Fund has grown by \$988 of direct contributions and a further \$24 of allocated investment income. Access to this fund balance of \$10,336 requires a majority vote at the Annual General Meeting.
- The Lake Book Fund has exceeded the threshold established by your board and is now able to move towards publication. This fund balance of \$31,378 will be spent on publication costs.
- The unrestricted net assets balance of \$26,187 represents the surplus available for the general purposes of the Association. 

LAKE WESLEMKOON CONSERVATION ASSOCIATION

Statement of Revenues & Expenditures

For the 12 months ended December 31, 2009 (unaudited)

	2009	2008
REVENUES		
Annual fees	\$ 11,204	\$ 11,488
Loon Call Advertising	873	242
Interest income	73	674
Maps & Miscellaneous sales	675	90
TOTAL REVENUES	\$ 12,825	\$ 12,494
EXPENDITURES		
Annual Meeting	\$ 341	\$ 414
Bank Charges	78	91
Administrative costs	573	479
Environmental protection	170	1,027
Legal	-	367
Custodial Visits	2,060	2,160
FOCA-Membership & Education	735	464
Insurance	1,436	1,393
Loon Call	2,558	1,961
New Shoal Markers	690	-
Shoal Marker Maintenance	775	835
Water Level Monitoring	900	900
Water Quality Monitoring	-	7,763
Junior Loons & other events	-	241
Bad debts	360	-
TOTAL EXPENDITURES	\$ 10,676	\$ 18,095
EXCESS OF REVENUES OVER EXPENDITURES	\$ 2,149	\$ (5,601)
NET ASSETS, BEGINNING OF PERIOD	\$ 24,038	\$ 29,639
NET ASSETS, END OF PERIOD	\$ 26,187	\$ 24,038

LAKE WESLEMKOON CONSERVATION ASSOCIATION

Statement of Reserves

As At December 31, 2009 (unaudited)

	2009	2008
ENVIRONMENTAL FUND		
Balance, beginning of the year	\$ 9,324	\$ 7,730
Restricted contributions during the year	988	1,400
Money Mkt Interest allocated	24	194
BALANCE, END OF THE YEAR	\$ 10,336	\$ 9,324
BOOK PROJECT FUND		
Balance, beginning of the year	\$ 22,198	\$ 10,548
Restricted contributions during the year	9,120	12,066
Money Mkt Interest allocated	61	275
Scanning costs	-	(691)
BALANCE, END OF THE YEAR	\$ 31,378	\$ 22,198



LAKE WESLEMKOON CONSERVATION ASSOCIATION

Statement of Financial Position

As At December 31, 2009 (unaudited)

	2009	2008
ASSETS		
CURRENT ASSETS		
Cash	\$ 24,313	\$ 12,316
Accounts Receivables	-	60
T.D. Money Market & TBill Fund	45,840	45,724
TOTAL ASSETS	\$ 70,153	\$ 58,100
LIABILITIES & RESTRICTED FUNDS & NET ASSETS		
CURRENT LIABILITIES		
Accounts payable and accrued liabilities	\$ 2,252	\$ 2,540
RESTRICTED FUNDS		
Environmental Fund	\$ 10,336	\$ 9,324
Book Project Fund	31,378	22,198
TOTAL LIABILITIES & RESERVES & NET ASSETS	\$ 41,714	\$ 31,522
NET ASSETS		
Unrestricted	\$ 26,187	\$ 24,038
TOTAL LIABILITIES & RESERVES & NET ASSETS	\$ 70,153	\$ 58,100

Membership

MEMBERSHIP IN THE LWCA supports your lake association's many activities, which include publication and distribution of this Loon Call newsletter and the annual Lake Directory, liaison with municipal and provincial agencies on issues affecting our lakes, maintenance of marker buoys, monitoring of water levels, water quality testing and more. In addition, your membership fee pays for two off-season custodial visits to your lake property. All in all a bargain for \$55 – or just \$50 if you renew before June 1!

In 2009, the LWCA had 206 members and 16 friends of the lake. Membership renewals for 2010 were sent out by email and regular mail in late February. If you have not yet renewed, please send a cheque for \$55 (\$50 if before June 1) to: LWCA Membership, c/o Jean Greig, 762 Armour Rd., Peterborough, ON, K9H 2A1. (Cheque payable to the LWCA.) Also, if your contact information has changed, please let us know.

Last year the association developed a very attractive LWCA brochure, which we distributed to non-member properties. This

YOUR LWCA MEMBERSHIP SUPPORTS AND FOCUSES RESOURCES ON INITIATIVES WHICH...

1. Are directed to benefit water quality through communication and awareness initiatives;
2. Continue actions supporting the shoreline and natural environment;
3. Influence waste management programs, new Township initiatives (e.g. road improvements), and the Township's Official Plan, and liaise with provincial ministries that deal with the environment;
4. Foster effective lake water level maintenance through coordinated efforts with the MNR for the dam (north end);
5. Install and care for the current marker lights, as best efforts allow;
6. Conduct two "off season" custodial cottage visits, as snow and water conditions permit, and communicate evidence of visible issues to the LWCA member/owner;
7. Promote sound logging practices which protect the lake and shoreline/natural environment;
8. Design and publish a lake map and update communications approaches;
9. Organize activities for skills development and member enjoyment whenever practicable (e.g. the Junior Loons);
10. Continue sound financial management, legal compliance and Environment Fund growth.

— Jim Reynolds, Past President

Jean Greig


campaign attracted a number of brand new members to the association and we plan to do it again this summer. If you would be willing to drop off brochures at a few neighbouring cottages, please contact me at jgreig@sympatico.ca. 



PHOTO: Pam Lawton

Municipal Affairs

Paul Bottos

I WOULD LIKE TO TAKE THIS opportunity to provide a brief review of the municipal issues which were dealt with by the LWCA during the past year and which may be of importance in the coming year.

1. GARBAGE

The Township last year hired a full-time employee to attend at both the Hartsmere and Weslemkoon waste sites and the hours of operation of both sites increased,

be an increased onus on all persons to ensure that recycling is separated from garbage materials. If you have any questions or comments, please do not hesitate to call the Township at 613-336-2286.

2. DEVELOPMENT ON THE LAKE

The LWCA continues to receive copies of development applications in and surrounding the lake from the Township. The LWCA looks forward to continuing to receive same.


building or structure such that same would not exceed four (4) metres. In addition, there were also amendments which would affect certain servicing requirements. For further information in regards to this by-law, please do not hesitate to contact the Clerk, Mr. Jack Pahl of the Township Office. The writer wishes to advise that at the time of the writing this report, that the writer did not have confirmation that these proposed amendments were in fact passed and in effect. Accordingly, please ensure that you contact the Township Office for further information.

4. OTTER LAKE

Once again, the LWCA wishes to advise that we continue to repeat our request for the Township to amend its official plan to ensure that Otter Lake is designated as a highly sensitive lake.

5. MUNICIPAL ELECTIONS

This year is an election year and we would ask and remind all persons to ensure that they vote in this year's elections and that they express any concern(s) or interest(s) which they may have to local politicians. We will request that certain interested parties attend at our annual general meeting for the purposes of advising as to their positions with respect to municipal matters. The agenda for the annual general meeting has not yet been set and therefore we cannot confirm the attendance of any persons at this time.

I trust this keeps you informed as to the developments which have transpired. Should any person express any interest in the above-noted issues or has any other issues which may be of interest, please do not hesitate to contact the LWCA in order that same may be raised and discussed. 

3. ZONING BY-LAW AMENDMENT

The Township gave notice and held a public meeting regarding an amendment to the zoning by-law number 0212/2006. The public meeting was held on March 8th, 2010 to outline the content and effect of the proposed amendment. The purpose of the proposed amendment was to make a number of changes which would serve to reduce the need for ongoing site specific changes to the existing by-law, revise a number of zone provisions and make a number of updates to better reflect existing

uses. While the proposed changes affected lands within the entirety of the Township, there were a handful of proposed amendments that affected or could affect the lands near or on our lake. This primarily dealt with recognizing an existing trailer park use and an existing camp ground business. The amendments to the by-law also wished to amend section 4.1.6.2 which would have the effect of maximizing the height of any accessory

THE TOWNSHIP INTRODUCED A NEW BAGGAGE SYSTEM REQUIRING CLEAR BAGS FOR ALL GARBAGE AND RECYCLING.

although not to the extent that was requested by the LWCA. We continue to work with all affected parties to address any concerns that they may have in regards to same. In addition, the Township introduced a new baggage system requiring clear bags for all garbage and recycling. The Township has indicated that they will be vigilant in inspecting garbage bags for recycling material and in the event that recycling material is present in garbage bags, the garbage bag will not be accepted by the attendant for disposal at the site. Accordingly, there will



PHOTO: Bill Riffle

An old dump in the woods. There was a time when cottagers simply dumped their garbage on their property.

The Lake Book

By Stuart Inglis

The Lake Book will be published mid/late summer 2010.

We're almost there. A notice will be sent out to all those who purchased a book giving the date when the book will be delivered to the marinas. Many thanks to all those who made it possible!

THE GAVEL – LWCA PRESIDENTS

The president (2007-2009) of the LWCA, Dan Derumaux is seen handing the Gavel to Terry Beettam (New President). The history of the Gavel is interesting and dates back to the early 1970's. Names of former Presidents can be seen on the gavel signed in ink as listed in the photo attached.

A gavel is a small ceremonial mallet commonly made of hardwood, typically fashioned with a handle and often struck against a wood block to enhance its sounding qualities. It is a symbol of the authority and right to act officially in the capacity of a chair or presiding officer.



Summer 2009
Dan Derumaux
hands gavel to the
new president
Terry Beettam



THE GAVEL – PRESIDENTS: Paul Lee (2002-2003), Karl Austin (1984-1985), Paul Armstrong (1986-1987), Jim Reynolds (2004-2005), Gord Greer (1990-1991), Marilyn Nash (1988-1989), Paul Lavelle (2001-2003), Alan Whyte (2000-2001), Frances Chiddy (1996-1997), Alice Hogg (1979), Mike Benson (1998-1999)

PHOTOS: Sean Boyle

Lake Events

2009 Lake Weslemkoon Regatta Results



DATE: August 1, 2009

TIME: 12pm - 3pm

RACES: 3 races

WINNER: Determined by averaging sailors placing

E.g. 1st place – 20 points
 2nd place – 10 points
 3rd place – 10 points

PHOTOS: Sean Boyle



Ned had a lovely day in the boat with Cathy Whyte, who was a former sailing instructor. She was very helpful in explaining the rules and strategies to each sailor we witnessed. We witnessed boats twirling and interesting duels between the competitors. It was a fun filled sunny day and we all had a great time. Thanks to the Sandiford family for hosting the event.



2009 Annual General Meeting



PHOTOS: Sean Boyle

The AGM this year was well attended and the weather was great. Our Grand Loon Catherine Rathbun is seen handing out the Cockeyed Loon Awards. Thanks to Frank and Freda Smith for hosting the event.



Horseshoes

By Ken Senter

A GREAT COTTAGE ACTIVITY TO avoid work and an excuse to have a few beers. To refresh your memory all that is required for a basic court is two round iron bars, 1 inch in diameter approx. 27" long embedded in 8x8 timbers or logs 36" long. Bury them 40 feet apart on level ground so that 15" of the bar is above the ground. Two pairs of pitching horseshoes and you are all set. Horseshoe sets can be purchased at Canadian Tire or other retailers, which include the shoes and stakes, or find them on the web.

Play is as follows. Flip a shoe to see who has the honour of shooting first. The winner of the toss throws two consecutive shoes while in line with the peg at



ABOVE, LEFT TO RIGHT: Chris Allore, Charlie Upshall, Jim Gibson, Delroy Bailey, Geoff Gibson, Ken Senter

FAR LEFT: Robertson Boyle, Jim Gibson

LEFT: Delroy Bailey, Sean Boyle, Ken Senter, Jim Gibson

the throwing end. The other player throws their shoes, and both players proceed to the other end to count the score. The closest shoe no more than 6 inches from the peg counts 1 point, and all others are void unless the same player who has the point has another shoe within 6 inches of the stake. A ringer counts 3 points and both tips of the horseshoe must extend past the stake. The ringer can be confirmed by placing a straight edge across the tips and if it doesn't rock or move it's a ringer.

A lot of players play until the first player reaches the score total of 21 after both players have shot all their shoes. Other players may choose to throw a defined number of shoes, e.g. 50 or 40.

Ladies, children under 16, and seniors may shoot from 30 feet away if they wish.

Doubles or 4 players play with one member of each team at each end and each player shoots like in singles and the other players at the other end count the points and throw the shoes back to be

counted again and so forth. Many players play to 21 or a defined number of shoes. To make all things equal the players change ends in doubles when the total score is 21, in case there is a headwind or the pits are at different elevations.

Official rules are included with sets or the National Horseshoe Pitching Association (NHPA) website.

Anybody looking for a game or tournament, please give Ken Senter a call at 613-474-0221, Cottage #680 West Bay. 🍷

Making Bread

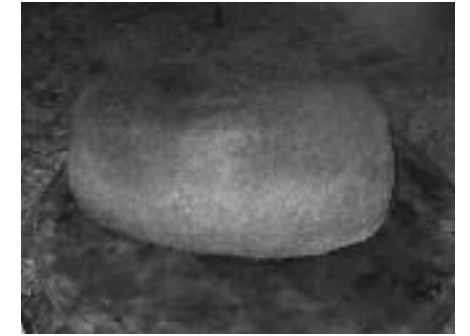
Not sure what to do at the cottage on those rainy days? Scott Morris and his wife Jennifer who have a cottage in Otter Lake decided to make bread. After three tries Scott and Jen make perfect bread. 🍷



First try.



Second try.



Third try: Perfect!!!!!!!



Scott Morris and wife Jennifer showing off their bread.

LWCA



PHOTOS: Bill Riffle

52th ANNUAL GENERAL MEETING

Saturday, July 31st, 2010
10:00 am
4 Loons Marina

See you there!



LWCA members are encouraged to visit
www.weslemkoon.com
for news, events, and updates.

Be sure to have your voice heard by doing the LWCA Lake Survey

Go to www.weslemkoon.com to fill one out.
Deadline is June 30th
See page 2 for details.

What's NEW on www.weslemkoon.com:

1. The Weslemkoon Community Survey
2. April to September Calendars for landfill hours for both Hartsmere and Weslemkoon sites.
3. The current Addington Highlands listing of recyclables for both sites.
4. An updated listing of Electronics that can be recycled.
It supercedes the listing in the Township's 2010 Newsletter.
5. Updated lists of volunteers who have served on the Association Board and the esteemed Cockeyed Loons.



PAINTINGS BY PIPHER



Lighthouse Lakescape

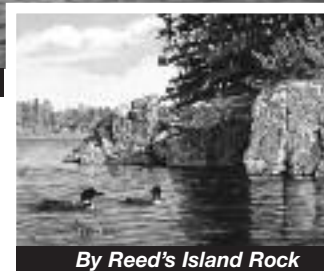
Paintings & prints
By chance or by appointment.
Browsers welcome.

Weslemkoon Lake
Cottage 210, Squally Bay,
Voice: 613-474-0007

Unionville
Voice: 905-475-2055
email: murray@pipher.ca
www.pipher.ca



M. Pipher. Painter.



By Reed's Island Rock



Morning Dance

WE URGE ALL LWCA MEMBERS TO SUPPORT THE ADVERTISERS

PROPANE SOLUTIONS

Environmentally Friendly Propane
RESIDENTIAL • COMMERCIAL • FARM



Providing Home Heating Comfort Since 1922

- 4 Wheel Drive Deliveries
- Discount For Seniors
- No Interest Equal Billing
- Equipment Sales & Service
- Hot Water Heater Rental
- 24 Hour Service

www.kellyspropane.ca

1.877.395.4328

The Loon Call

The Loon Call would like contributions such as stories, photos of activities with your family on the lake, interesting articles concerning Lake Weslemkoon and Otter Lake, legends and information to add greater depth to *The Loon Call*.

Send your information to the editor:
Sean Boyle,
The Fairmont Royal York Hotel,
100 Front St. West,
Toronto, ON M5J 1E3

Email:
boylerealestate@boylecommercial.com

RON DENNIS
CARPENTRY & RENOVATIONS
613-474-0035
rondenniscr@live.com

Services include:

- New Construction & Additions
- Cabinetry & Kitchens
- Bathrooms
- Flooring – Ceramic, Wood or Tile
- Painting
- Windows & Doors
- Chimney Installations
- Decks & Docks & Fences
- Garages

WETT Inspection Available

Ron offers a wide variety of fine quality onsite renovations



Call Ron for your FREE Estimate
(references upon request)

For your convenience Ron is located on Weslemkoon Lake!

Fully Insured & Work Guaranteed



Cedar Ridge Camp

Bancroft, Ontario

Traditional Residential Summer Camp
Co-ed 6-16 yrs.
2 week, one month sessions



Overnight and Day Camping Programs Available

Activities include:

- Swimming
- Canoeing
- Climbing
- Mountain Biking
- Tripping
- Arts & Crafts
- Sports
- Games
- Horseback Riding



Cedar Ridge Camp is located in McArthurs Mills



For more information, please call
1-877-334-6675 or 613-332-6675

e-mail: info@cedarridgecamp.ca

www.cedarridgecamp.ca



ACCREDITED
MEMBER

OCA
Ontario Cancer Association